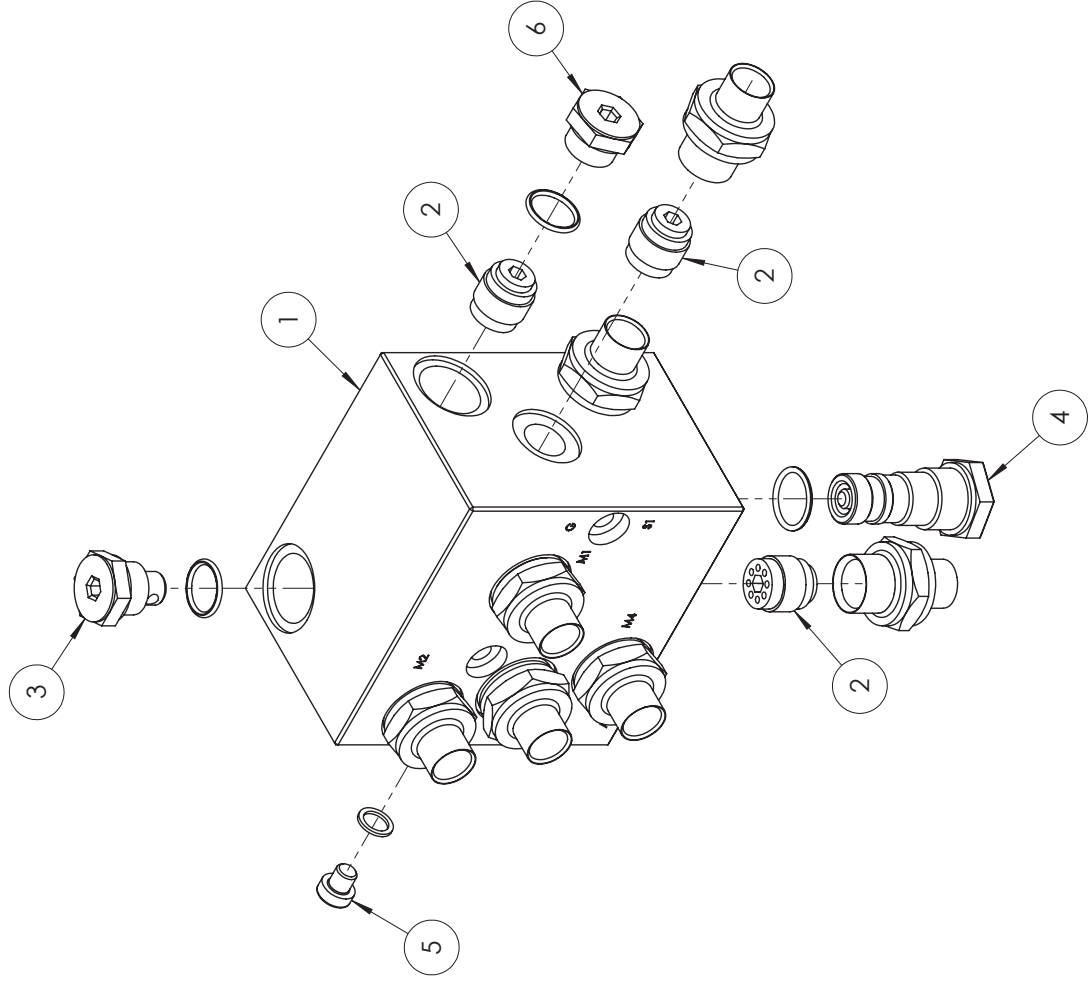


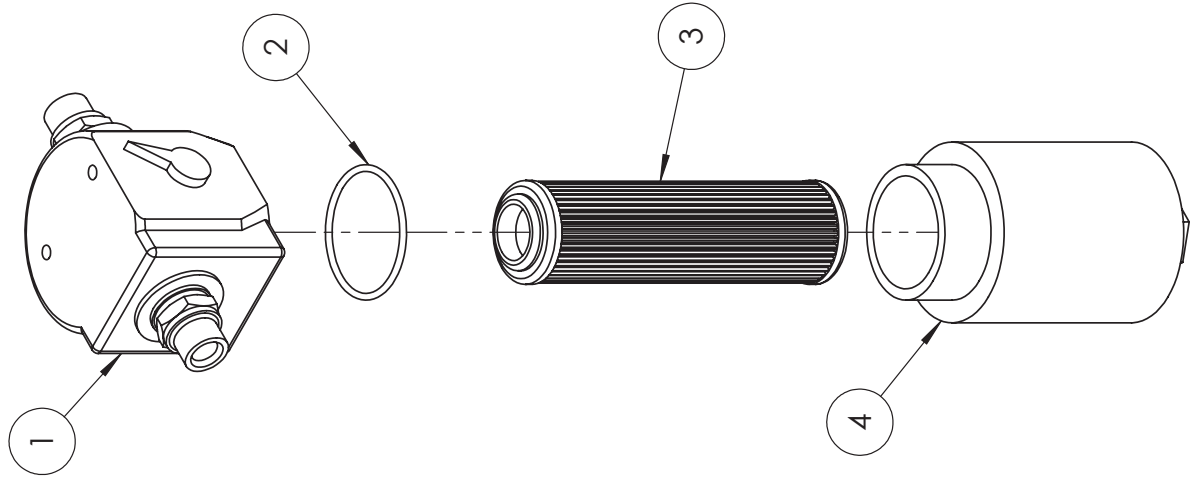
Tanco Autowrap - 1310 / 1320  
 Ersatzteilliste / Spare Parts Manual / Liste des pièces de rechange

POS. NR.	TEILE NR.	STUCK	BENENNUNG	DESCRIPTION	DESIGNATION	TECHNISCHE ANGABEN
POS. NR.	PART NR.	QUANTITY				TECHNICAL DATA
POS. NO.	PIECE NO.	QUANTITEE				DONNEES TECHNIQUES
1	1308154	1		Tower Block		
2	1308170	1		Reversing Valve		
3	1308302	1		Check Valve		1/2" x 1.5 Ba
4	1308109	1		Brake Valve		(8:1)
5	1308108	2		Cross Line Relief Valve		
6	1308221	4		Allenhead Bolt		M5 x 30mm
	1308153	1		Tower Valve Seal Kit		



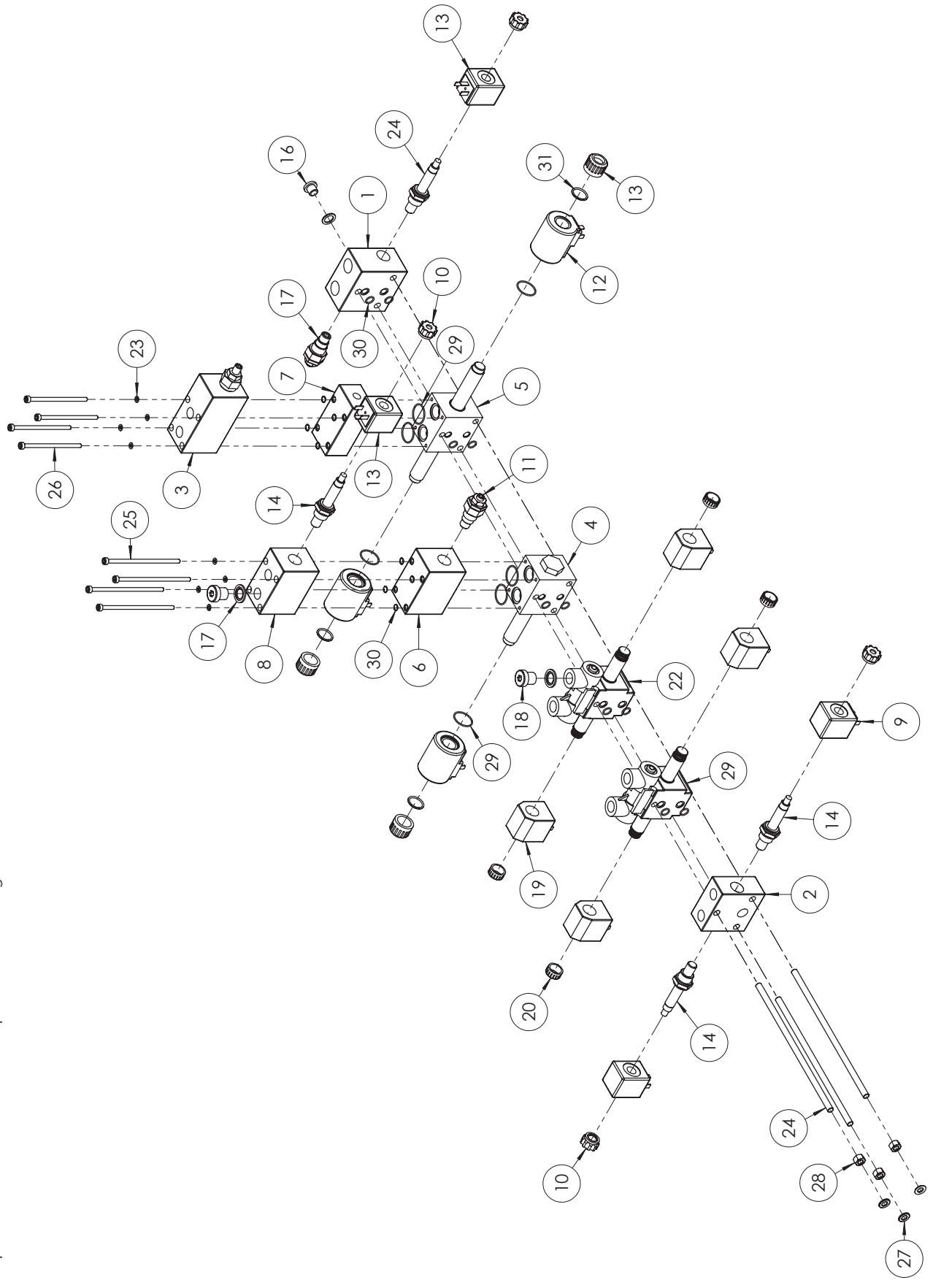
Tanco Autowrap - 1310 / 1320  
 Ersatzteilliste / Spare Parts Manual / Liste des pièces de rechange

POS. NR.	TEILE NR.	STUCK	BENENNUNG	DESCRIPTION	DESIGNATION	TECHNISCHE ANGABEN
POS. NR.	PART NR.	QUANTITY				TECHNICAL DATA
POS. NO.	PIECE NO.	QUANTITEE				DONNEES TECHNIQUES
1	1308351	1		Assembly Block		
2	1308302	3		Check Valve		1/2" x 1,5 Ba
3	1308230	1		Male Plug with Orifice		1/2"   5mm
4	1508106	1		Pilot Controlled Non-Return Valve		
5	1308115	1		Male Plug		1/8"
6	Z01-06-MB08	1		Male Plug		1/2"
	1308353	1		Assembly Block Seal Kit		



Tanco Autowrap - 1310 / 1320  
 Ersatzteilliste / Spare Parts Manual / Liste des pièces de rechange

POS. NR.	TEILE NR.	STUCK	BENENNUNG	DESCRIPTION	DESIGNATION	TECHNISCHE ANGABEN
POS. NR.	PART NR.	QUANTITY				TECHNICAL DATA
POS. NO.	PIECE NO.	QUANTITEE				DONNEES TECHNIQUES
1	1308073	1		Filter Head Unit		
2	1308072	1		Filter O-Ring		
3	1308071	1		Filter Element		
4	1308074	1		Filter Bowl		



Tanco Autowrap - 1310 / 1320  
Ersatzteilliste / Spare Parts Manual / Liste des pièces de rechange

POS. NR.	TEILE NR.	STUCK	BENENNUNG	DESCRIPTION	DESIGNATION	TECHNISCHE ANGABEN
POS. NR.	PART NR.	QUANTITY				TECHNICAL DATA
POS. NO.	PIECE NO.	QUANTITEE				DONNEES TECHNIQUES
1	1318104	1		Common Inlet section		
2	1318105	1		1320 End Section		
3	1308720	1		Single Overcenter Valve		
4	1308703	2		1 Dir spool valve(c/w sol)-L93		
5	1308704	1		2 Dir spool valve OC (c/w Sol)		
6	1318106	1		Relief Valve Block		
7	1318103	1		End Tip Block		
8	1318108	1		2 Speed Block Complete		
9	34087521	1		12 V Solenoid Coil		
10	1308108	3		Cross Line Relief Valve		
11	1308201	1		Master Valve		
12	1308732	3		Pressure Relief Valve		
13	1308202	2		Solenoid		
14	1308172	4		Coil		
15	1308205	4		Plastic Nut for 2 Speed/Master		
16	1308220	3		Plastic Nut for Coil		
17	1318115	1		Main Relief Valve		
18	Z01-04-02	2		3/8" Dowty Washer PPSC-06		
19	Z01-06-MB06	1		3/8" Male Blank BP-06		
20	1318107	2		Plastic Nut		
21	1318109	3		Tie Bolt		M8 x 245MM
22	1318102	3		Folding Control Valve Section		
23	1318113	8		Lock Washer		M5
24	1308708	4		Master Valve		
25	1318110	10		Socket Cap Screw		M5 x 120MM
26	1318111	7		Socket Cap Screw		M5 x 95MM
27	1318113	3		Lock Washer		M5
28	Z18-08	3		Nut		M8
29	1318112	1		Cut & Start Valve Section		
30	1318115	8		Control Valve Seal Kit		